



RTYC Annual Regatta and RORC Vice Admirals Cup

Cape 31 Race Circuit – Round 5

“European International Yacht Racing Cup”

6 – 8 September 2024

SAILING INSTRUCTIONS (SIs)

The Organizing Authority (OA) is the Royal Thames Yacht Club (RTYC) and Royal Ocean Racing Club (RORC) in conjunction with the UK Cape 31 Class Association and 31 North Ltd.

The notation '[NP]' in a rule of the Sailing Instructions (SIs) means that a boat may not protest another boat for breaking that rule. This changes RRS 60.1(a).

1 RULES

- 1.1 The event is governed by the rules as defined in The Racing Rules of Sailing (RRS).

2 CHANGES TO SAILING INSTRUCTIONS

- 2.1 Any change to the SIs will be posted before 0900 on the day it will take effect, except that any change to the schedule of races will be posted by 2000 on the day before it will take effect.
- 2.2 Changes to the SIs may be made on the water by announcement over VHF Channel 06 as well as confirmation of the change via the Event Messaging System.

3 COMMUNICATIONS WITH COMPETITORS

- 3.1 Notices to competitors will be posted on the official notice board located online at <https://cms.cape31class.com/racing/regatta/40>. The Event Messaging System (a WhatsApp Group) will be used to summarise official notices and make other communications as detailed in the SIs. The link to join the Event Messaging System can be found at the end of these SIs. At least one member of a boat's crew shall join the Event Messaging System by the 5 September.
- 3.2 The race office is located at Shepards Wharf Marina, Cowes.
- 3.3 On the water, the race committee intends to monitor and communicate

with competitors on VHF radio channel 06

3.4 The following communications may be made by the race committee on VHF channel 06: location of race committee vessel, alternate preparatory signals, courses, postponement, abandonment, starting signals, and recalls.

3.5 A briefing will be held on the 5 September at 18:00 virtually for the Race Committee and the OA to set out the intentions for the weekend as well as any other relevant information. A joining link will be posted in the Event Messaging System (WhatsApp Group) on 5 September.

4 (NP) CODE OF CONDUCT

4.1 Competitors and support persons shall comply with all reasonable requests from race officials.

5 SIGNALS MADE ASHORE

5.1 No signals will be displayed ashore. The race committee will use the Event Messaging System to keep competitors informed whilst ashore.

6 SCHEDULE OF RACES

6.1 The provisional schedule is as follows:

Schedule	Friday – 6th	Saturday – 7th	Sunday – 8th
First warning	11.55	tbc	tbc
No warning after			14.55
HW Portsmouth (UTC + 1)	13.58	14.27	14.59
	4.53m	4.48m	4.39m
LW Portsmouth (UTC + 1)	7.12 am	7.72 am	8.09am
	0.91m	1.0m	1.1m

6.2 9 races are scheduled. A maximum of four races per day may be sailed.

7 CLASS FLAGS

7.1 The class flag will be the Cape 31 logo on a black background.

8 RACING AREA

8.1 The location of the start line will be announced via the Event Messaging System and repeated on VHF by 10.30am on each race day.

9 COURSES

9.1 The diagrams in SI Addendum A show the course(s), including the approximate angles between legs, the order in which marks are to be

rounded, and the side on which each mark is to be rounded.

9.2 No later than the warning signal, the race committee signal vessel will display the course signal and the approximate compass bearing of the first leg.

9.3 If either gate mark is missing, boats shall round the remaining gate mark to port.

10 MARKS

10.1 Mark(s) 1, 1a, 4s and 4p will be inflatable Navy Blue buoys.

10.2 The start marks will be the Race Committee Boat - Gemini Breeze (a 10m M/V Blue hull, with white topsides) displaying an Orange Flag and either a Rib or a Dan buoy displaying an Orange flag.

10.3 The finish marks will be the Race Committee Boat displaying a Blue Flag and either a Rib or Dan buoy displaying a Blue flag .

11 OBSTRUCTIONS

11.1 Not used.

12 THE START

12.1 Races will be started using RRS 26 with the warning signal made 5 minutes before the starting signal.

12.2 To alert boats that a race will begin soon, the orange starting line flag will be displayed with multiple sound signals not less than 5 minutes before a warning signal is displayed.

12.3 The starting line is between a staff displaying an orange flag on the committee vessel at the starboard-end and the course side of the port-end starting mark or the staff displaying an orange flag on the pin end rib.

12.4 In addition to RRS 29.1, if any part of a boat's hull is on the course side of the starting line at her starting signal and she is identified, the race committee will attempt to hail her bow or sail number on VHF radio. Failure to hail her number, failure of her to hear such a hail, or the order in which boats are hailed shall not be grounds for a redress. This changes RRS 62.1(a)

12.5 A boat that does not start within 4 minutes after her starting signal will be scored Did Not Start without a hearing. This changes RRS A5.1 and A5.2

13 CHANGE OF THE NEXT LEG OF THE COURSE

13.1 To change the next leg of the course, the race committee will move the original mark or the finishing line to a new position.

13.2 The race committee may change a leg of the course by up to 10 degrees in bearing and/or 100m in length without a signal. This changes RRS 33 and Race Signals.

14 THE FINISH

- 14.1 The finishing line is between a staff displaying a blue flag on the race committee vessel at the starboard-end and the course side of the port-end finishing mark or a staff displaying a blue flag on the pin end Rib.

15 PENALTY SYSTEM

- 15.1 See NoR 11.

16 TIME LIMITS AND TARGET TIMES

- 16.1 The target time for each race is 45 minutes. Failure to meet this time shall not be grounds for redress. This changes RRS 62.1(a).
- 16.2 The time limit for race will be 90 minutes. If no boat has finished within the race time limit, the race will be abandoned. Abandonment of a race in accordance with this SI shall not be grounds for redress, this changes 62.1(a).
- 16.3. All boats shall finish within 20 minutes of the first boat to finish.
- 16.4 All boats that are still racing after the 20 minutes time limit in SI 16.3 shall be scored points equal to the place after the last boat that finishes within that time limit without a hearing. This changes RRS A4 and A5.1.

17 HEARING REQUESTS

- 17.1 The protest time limit is 75 minutes after the last boat finishes the last race of the day or the race committee signals no more racing today, whichever is later. The time will be posted on the official notice board and repeated on the Event Messaging System.
- 17.2 Hearing request forms are available from the race office.
- 17.3 Notices will be posted no later than 30 minutes after the protest time limit to inform competitors of hearings in which they are parties or named as witnesses with approximate times for each hearing. Hearings will be held virtually and joining links will be sent to all parties and witnesses to hearings. Notices of hearing will be repeated on the Event Messaging System.

18 SCORING

- 18.1 See NoR 12.

19 [NP] SAFETY REGULATIONS

- 19.1 A boat that retires from a race shall notify the race committee via VHF before leaving the course, or, when that is impossible, immediately after arrival ashore by contacting the race office.

20 REPLACEMENT OF CREW OR EQUIPMENT

- 20.1 Not used.

21 [NP] EQUIPMENT INSPECTION

- 21.1 A boat or equipment may be inspected at any time for compliance with the class rules, notice of race and sailing instructions between the 1st scheduled warning signal and the protest time limit on the final day.
- 21.2 If a boat is selected for post-race inspection it shall not transfer any of its equipment on or off the boat until completion of the inspection, shall follow all reasonable requests of the technical committee, and present its equipment at the time and location specified by the technical committee.
- 21.3 If a boat's crew is selected for post-race weighing as per class rule C.2.2(b), the crew shall report to the location specified by the technical committee within 1 hour after being notified for weighing.
- 21.4 Boats and crew will be randomly selected using the Class Management System and notices of those boats and crew selected for post-race inspection and crew weighing shall be posted on the Event Messaging System.
- 21.5 At least one member of the crew shall monitor the Event Messaging System before returning ashore to establish if their boat has been selected for inspection or weighing.

22 SUPPLIED BOATS

- 22.1 Not used.

23 OFFICIAL VESSELS

- 23.1 Official vessels will be identified by displaying a Royal Thames Yacht Club Burgee. The "On the water observer" will display a white flag with the Word "Jury".

24 SUPPORT TEAMS

- 24.1 All support vessels shall carry a marine VHF radio capable of receiving and transmitting on all international channels.

25 TRASH DISPOSAL

- 25.1 Trash may be placed aboard official vessels.

26 BERTHING

- 26.1 Not used.

27 HAUL-OUT RESTRICTIONS

- 27.1 Not used.

28 DIVING EQUIPMENT AND PLASTIC POOLS

- 28.1 Not used.

29 PRIZES

- 29.1 Prizes will be awarded as soon as possible after the racing on the last day

at RORC's Cowes Clubhouse.

30 RISK STATEMENT

30.1 See NoR 18.

31 INSURANCE


31.1 See NoR 19.

Event Messaging System (WhattsApp) joining link:

URL:

<https://chat.whatsapp.com/ltcY83gGTmALvUPSrOhCis>

QR Code:

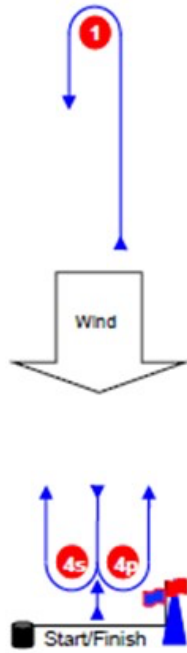
RTYC Cape 31 R5 & VAC 
WhatsApp group



SI ADDENDUM A – COURSES

Course Illustrations – Windward Leeward

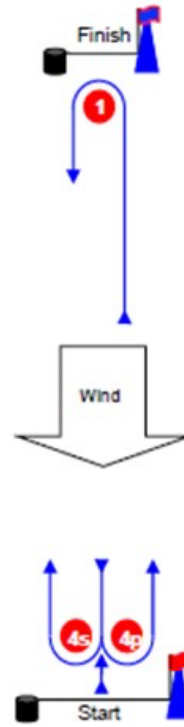
L



Course: Leeward finish

Signal	Mark Rounding Order
L2	Start – 1 – 4s/4p – 1 – Finish
L3	Start – 1 – 4s/4p – 1 – 4s/4p – 1 – Finish
L4	Start – 1 – 4s/4p – 1 – 4s/4p – 1 – 4s/4p – 1 – Finish

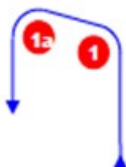
W



Course: Windward Finish

Signal	Mark Rounding Order
W2	Start – 1 – 4s/4p – Finish
W3	Start – 1 – 4s/4p – 1 – 4s/4p – Finish
W4	Start – 1 – 4s/4p – 1 – 4s/4p – 1 – 4s/4p – Finish

LA / WA



Course: Windward/leeward with offset mark 1a

Signal	Mark Rounding Order
LA2	Start – 1 – 1a – 4s/4p – 1 – 1a – Finish
LA3	Start – 1 – 1a – 4s/4p – 1 – 1a – 4s/4p – 1 – 1a – Finish
LA4	Start – 1 – 1a – 4s/4p – 1 – 1a – 4s/4p – 1 – 1a – 4s/4p – 1 – 1a – Finish
WA2	Start – 1 – 1a – 4s/4p – Finish
WA3	Start – 1 – 1a – 4s/4p – 1 – 1a – 4s/4p – Finish
WA4	Start – 1 – 1a – 4s/4p – 1 – 1a – 4s/4p – 1 – 1a – 4s/4p – Finish