

# Cape 31 Summer-in-the-South Series

## Cape 31 Class Warm-up Regatta, Tip-of-Africa Regatta and Saldanha Bay Regatta

Saturday 25 & Sunday 26 November 2023, Friday 1 to Sunday 3 December 2023, and  
Saturday 24 & Sunday 25 February 2024.

### SUPPLEMENTARY SAILING INSTRUCTIONS

The sailing instructions for these Events will consist of the Standard Sailing Instructions (SSI) in RRS Appendix S and these supplementary sailing instructions:

## **1. SHORTENING COURSE**

- a.** In addition to the provisions of RRS 32, the race committee may also signal a shortened course before the first boat reaches a gate or rounding mark by displaying flag F with repeated sounds. On this signal boats shall pass through the gate or round the mark as required to sail the course, and thereafter proceed directly to the finishing line. This signal shall continue to be made until all boats still racing have passed these marks. This changes RRS 32.

## **2. SIGNALS MADE ASHORE**

- a.** Signals made ashore will be transmitted on the Opening Series Whatsapp Group - see the ONB for the link.

## **3. PENALTIES**

- a.** The first two sentences of RRS 44.1 are changed to: "A boat may take a One-Turn Penalty when she may have broken one or more rules of Part 2 or RRS 31 in an incident while racing. However, when she may have broken one or more rules of Part 2 while in the zone around a mark other than a starting mark, her penalty shall be a Two-Turns Penalty".
- b.** In RRS 44.2 insert after the first sentence: "However, on a windward/leeward course, if Mark 1a (windward spreader mark) is set, a boat shall take a penalty for an incident in the zone around Mark 1 or on the leg between Mark 1 and Mark 1a, as soon as possible after leaving the zone around Mark 1a".

#### 4. MARKS

Windward mark (1)	Red cylindrical buoy
Spreader mark (1a)	Red cylindrical buoy
Gate marks (2s & 2p)	Yellow cylindrical buoys
Centre mark (r)	Orange cylindrical buoy
Starting/finishing pin	Pink spherical buoy
Race committee vessel	

#### 5. CHANGE OF THE NEXT LEG OF THE COURSE

- a. RRS App S 10.1 is deleted and replaced by: To change the next leg of the course, the race committee will move the original mark (or the finish line) to a new position. If Mark 1 is moved during a race, Mark1a is no longer a mark of the course.

#### 6. TIME LIMITS

- a. Mark 1 Time Limit: 20 min  
Race Time Limit: 60 min  
Finishing Window: 10 min

#### 7. SAFETY

A boat that retires from a race shall notify the Race Committee as soon as reasonably possible.

#### 8. RADIO COMMUNICATION

- a. All boats are required to keep a listening watch on the designated VHF channel from 30 minutes before the first scheduled race of the day until they have left the racing area after racing.
- b. The Race Committee may communicate, over the designated VHF channel, changes to Sailing Instructions, boats called OCS, and other information before and during racing. Failure to hear this communication will not be grounds for a request for redress. This changes RRS 60.1(b).

## 9. SCORING

Two races are required to be completed to constitute an Event.

## 10. POST-RACE DEBRIEFS

After each day of the Event an informal racing discussion/debrief will be hosted at a venue to be announced.

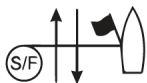
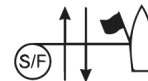
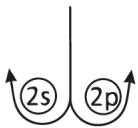
## 11. COURSE DIAGRAMS

The courses in the SSI are replaced by the courses below:

  
Course L



  
Course LM

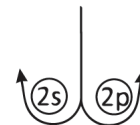


Signal

L2 | LM2  
L3 | LM3  
L4 | LM4

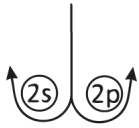
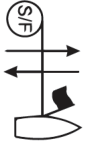
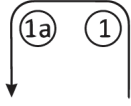
Mark Rounding Order

S - 1 - 2s/p - 1 - F  
S - 1 - 2s/p - 1 - 2s/p - 1 - F  
S - 1 - 2s/p - 1 - 2s/p - 1 - 2s/p - 1 - F





Course R



Signal Mark Rounding Order

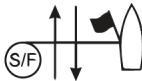
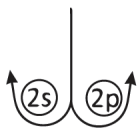
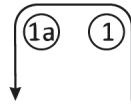
R1 S - r - 2s/p - 1 - 1a - r - F

R2 S - r - 2s/p - 1 - 1a - 2s/p - 1 - 1a - r - F

R3 S - r - 2s/p - 1 - 1a - 2s/p - 1 - 1a - 2s/p - 1 - 1a - r - F



Course LA



Signal Mark Rounding Order

LA2 | LAM2 S - 1 - 1a - 2s/p - 1 - 1a - F

LA3 | LAM3 S - 1 - 1a - 2s/p - 1 - 1a - 2s/p - 1 - 1a - F

LA4 | LAM4 S - 1 - 1a - 2s/p - 1 - 1a - 2s/p - 1 - 1a - 2s/p - 1 - 1a - F



Course LAM

